

# DESIGN DETAILS

**COIL TYPE:**  
EVAPORATOR COIL

**TUBING**  
COPPER 3/8"OD X 0.12" WALL RIFLED

**TUBE PATTERN**  
4 ROWS, 0.866" C-C  
40 FACE TUBES, 1.00" C-C

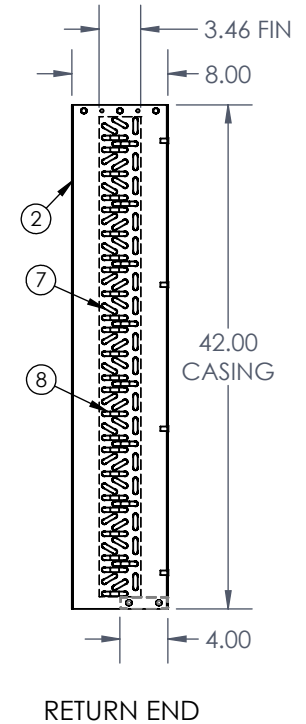
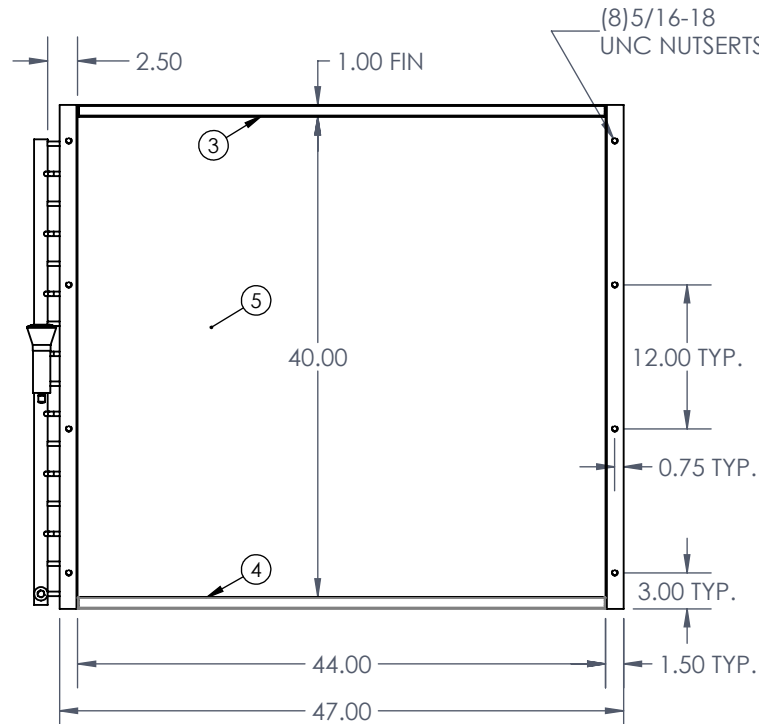
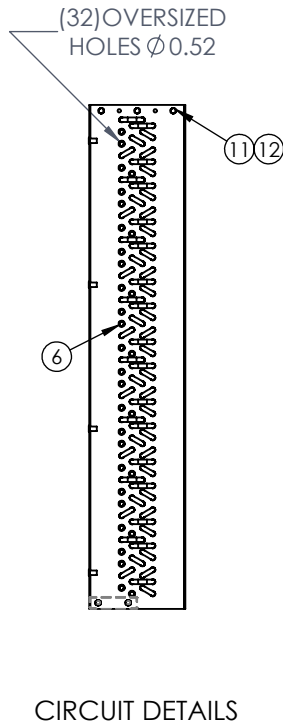
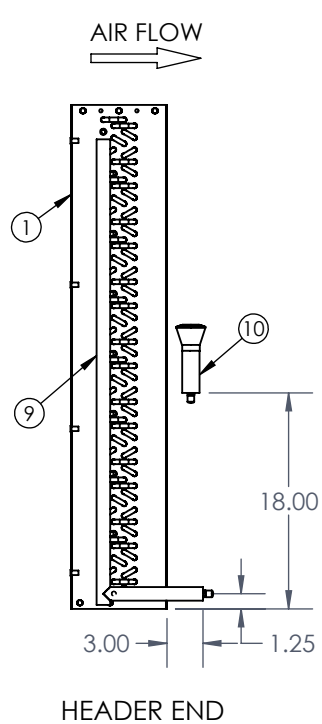
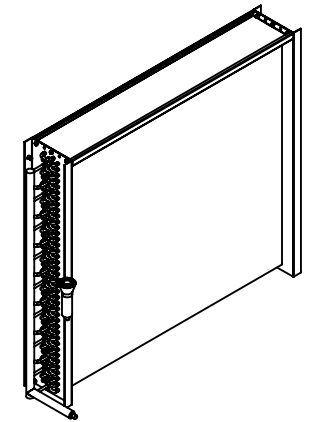
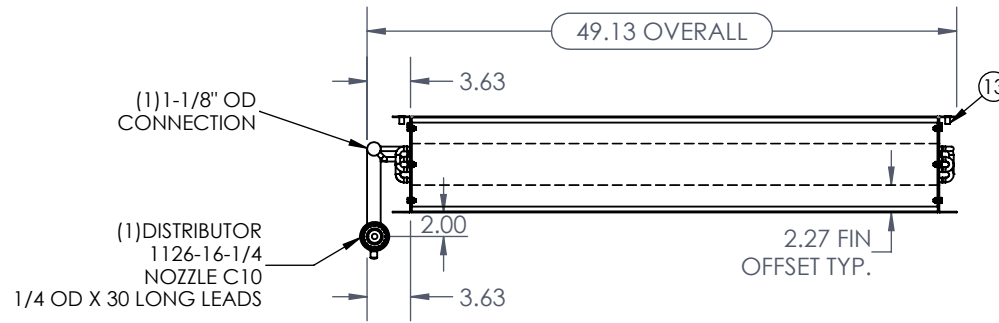
**CASING**  
16 GA 304 STAINLESS STEEL CASING.

**FIN**  
0.006" ALUMINUM  
10 FPI , 44.00 FIN LENGTH  
CORRUGATED/RIPPLED

**HEADER/DISTRIBUTOR**  
INLET DIST. 1126-16-1/4-10  
OUTLET 1-1/8" OD X 0.050" W

**NOTE:**  
CLOSE ALL ENDS & CHARGE COIL WITH NITROGEN TO 5-10 PSI

REVISIONS		
REV.	DESCRIPTION	DATE



DIMENSIONS ARE IN INCHES  
TOLERANCES:  
FRACTIONAL  $\pm 1/32$   
ANGULAR: MACH  $\pm$  BEND  $\pm$   
TWO PLACE DECIMAL  $\pm 0.063$   
THREE PLACE DECIMAL  $\pm 0.031$

**PROPRIETARY AND CONFIDENTIAL**  
THE INFORMATION CONTAINED IN THIS DRAWING IS THE SOLE PROPERTY OF DIRECT COIL INC. ANY REPRODUCTION IN PART OR AS A WHOLE WITHOUT THE WRITTEN PERMISSION OF DIRECT COIL INC. IS PROHIBITED.

	NAME	DATE
DRAWN	VG	JUN 27/13
CHECKED	PT	JUN 28/13
MFG APPR.	-	-



DIRECT COIL INC.  
5055 TAYLOR KIDD BLVD.  
MILLHAVEN, ONT. K0H 1G0  
PHONE: 613-544-2200  
FAX: 613-544-7779

COIL CERTIFICATION:  
CSA FILE No. : 242755  
MODEL : DC1

CUSTOMER PART No.: -

THIRD ANGLE PROJECTION  
DO NOT SCALE DRAWING

SIZE	DWG. NO.	REV.
A	DC1-16046	--00

SCALE: 1:16 WEIGHT: NOT CALCULATED

SHEET 1 OF 1

**DX COIL REPORT**

5055 Taylor Kidd Blvd T:(613) 544-2200  
 Millhaven, Ontario F:(613) 544-7779  
 Canada,  
 K0H 1G0 E-Mail: info@directcoil.com  
 Website: directcoil.com

**Company:** DC Website  
**Contact:**  
**Tel:**  
**Fax or Email:**

**Date:** January 15, 2020  
**Reference:**  
**Prepared By:**  
**Project Name:** Performance & Std price for  
 Overstock coils

**Coil Tag: DC1-16046**  
**Coil Model Number: 3DX-04-40.0-10-44.0-16**  
**Item: 011, Coil Hand: Right**

**Physical Data**

Number Of Coils	One (1)	Tube Material	Copper
Fin Height (Per Coil)	40.000"	Tube Diameter	3/8 1.00 x 0.866
Fin Length (Per Coil)	44.000"	Tube Material	Copper - 0.012 Rifled
Number Of Rows Deep	Four (4)	Fin Material	Aluminum 0.006
Number Of Feeds	16	Fin Style	Corrugated
Fins Per Inch	Ten (10)	Coil Weight (Per Coil)[operating]	118 [127] LBS
Supply Connection Size	1 1/8"	Coil Internal Volume (Per Coil)	0.440 ft <sup>3</sup>
Return Connection Size	1 1/8"	Coil Style	Single-Circuit
Connection Type	Sweat Copper	Dist-1 (feeds)	16
Header Material	Copper (L)	Casing Style	Standard
		Casing Material	Stainless Steel 16 gauge

**Air Data**

Total Airflow (All Coils)	5,500 SCFM
Airflow (Per Coil)	5,500 SCFM
Face Velocity	450 FPM
Altitude	0.00 FT
Entering Dry Bulb	75.00 °F
Entering Wet Bulb	63.02 °F
Leaving Dry Bulb	54.31 °F
Leaving Wet Bulb	52.12 °F
Air Pressure Drop	0.29" WG
Condensate Rate (Per Coil)	44.33 lb/h
Fouling Factor	0.0000 ft <sup>2</sup> °F h/Btu

**Refrigerant Data**

Refrigerant	R410a
Suction Temperature	45.00 °F
Liquid Temperature	110.00 °F
Superheat	10.00 °F
Refrigerant Pressure Drop	6.10 PSI
Refrigerant Velocity	3075 FPM
Refrigerant Mass Flow (All Coils)	2565 lb/h
Refrigerant Charge (Per Coil)	9.36 LBS
Refrigerant Charge (All Coils)	9.36 LBS

**Capacity**

Total Capacity Per Coil (Total)	173.90 MBH (173.90)
Sensible Capacity Per Coil (Total)	123.36 MBH (123.36)
Latent Capacity Per Coil (Total)	50.54 MBH (50.54)

**Notes:**

- Coil is NOT certified by AHRI.  
Software version: 0.99.8166