

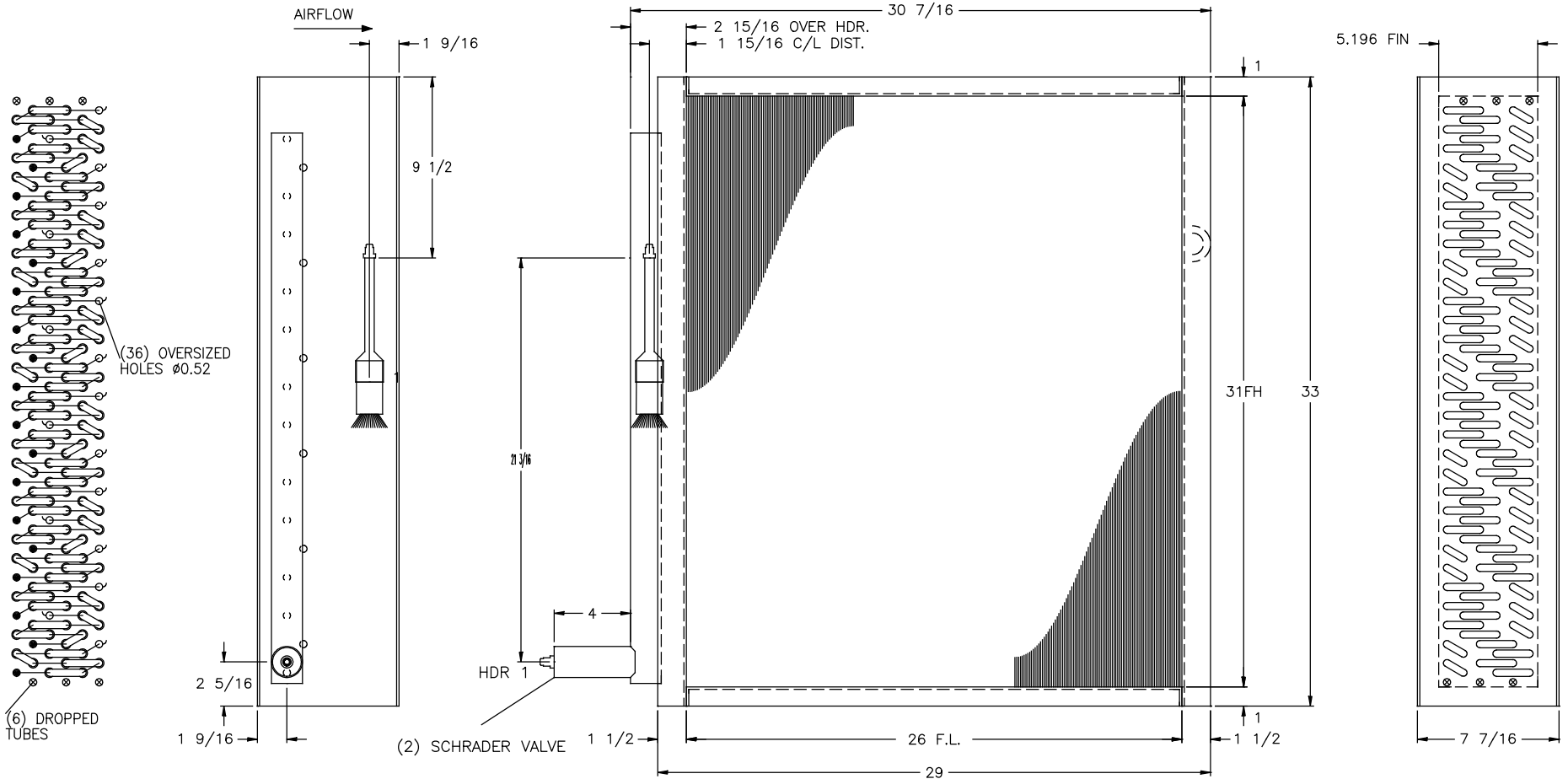
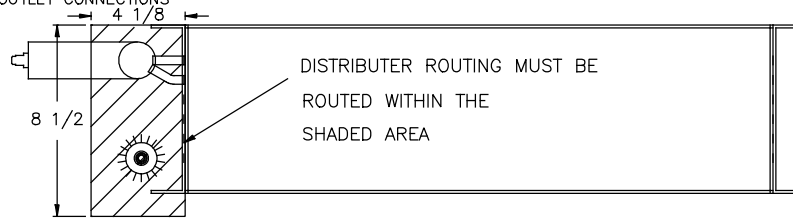
COIL DETAILS

MODEL NUMBER: 3DX-06-31.0-10-26.0-18 HANDING: RH
 FINS: 0.01 AL CORR @ .10 PER INCH
 TUBING: 3/8 OD X .014 CU ON 1. X 0.866 CTRS
 CASING: 304L 16 GA.
 HEADER: 1.625" O.D. TYPE 'L' COPPER
 DISTRIB: 1136-18-1/4-G15 (25" LEADS)
 CONNS: 1.625" / 0.5" O.D TYPE 'L' COPPER
 ROWS DEEP: 6 TUBES HIGH: 31
 CIRCUITS: 18
 VERSION: CoiLeary_MOL v 1.0.244

NOTES

CAP ALL OPENINGS AND CHARGE COIL WITH 5-10 PSI NITROGEN
 SCHRADER ON INLET AND OUTLET CONNECTIONS

STAINLESS STEEL CASING



CSA FILE NO.: 242755 UL FILE NO.: SA 32693	MODEL NO.: DC1 COIL TYPE: EVAPORATOR	DIRECT COIL INC. 5055 TAYLOR KIDD BLVD., MILLHAVEN, ONT., K0H 1G0	
PROPRIETARY AND CONFIDENTIAL THE INFORMATION CONTAINED IN THIS DRAWING IS THE SOLE PROPERTY OF DIRECT COIL INC. ANY REPRODUCTION IN PART OR AS A WHOLE WITHOUT THE WRITTEN PERMISSION OF DIRECT COIL INC. IS PROHIBITED			
PROJECT NAME-ITEM			
ITEM TAG			
DATE 12/15/2016	ENGINEER	DESIGNER KH	APP'D BY
CUSTOMER		DWG. NO. DC1-16045	

DX COIL REPORT

5055 Taylor Kidd Blvd T:(613) 544-2200
 Millhaven, Ontario F:(613) 544-7779
 Canada,
 K0H 1G0 E-Mail: info@directcoil.com
 Website: directcoil.com

Company: DC Website
Contact:
Tel:
Fax or Email:

Date: January 15, 2020
Reference:
Prepared By:
Project Name: Performance & Std price for
 Overstock coils

Coil Tag: DC1-16045
Coil Model Number: 3DX-06-31.0-10-26.0-18
Item: 010, Coil Hand: Right

Physical Data

Number Of Coils	One (1)	Tube Material	Copper
Fin Height (Per Coil)	31.000"	Tube Diameter	3/8 1.00 x 0.866
Fin Length (Per Coil)	26.000"	Tube Material	Copper - 0.012 Rifled
Number Of Rows Deep	Six (6)	Fin Material	Aluminum 0.010
Number Of Feeds	18	Fin Style	Corrugated
Fins Per Inch	Ten (10)	Coil Weight (Per Coil)[operating]	112 [119] LBS
Supply Connection Size	1 1/8"	Coil Internal Volume (Per Coil)	0.334 ft ³
Return Connection Size	1 5/8"	Coil Style	Single-Circuit
Connection Type	Sweat Copper	Dist-1 (feeds)	18
Header Material	Copper (L)	Casing Style	Standard
		Casing Material	Stainless Steel 16 gauge

Air Data

Total Airflow (All Coils)	2,519 SCFM
Airflow (Per Coil)	2,519 SCFM
Face Velocity	450 FPM
Altitude	0.00 FT
Entering Dry Bulb	80.00 °F
Entering Wet Bulb	67.03 °F
Leaving Dry Bulb	50.42 °F
Leaving Wet Bulb	49.78 °F
Air Pressure Drop	0.45" WG
Condensate Rate (Per Coil)	42.79 lb/h
Fouling Factor	0.0000 ft ² °F h/Btu

Refrigerant Data

Refrigerant	R410a
Suction Temperature	45.00 °F
Liquid Temperature	110.00 °F
Superheat	10.00 °F
Refrigerant Pressure Drop	1.88 PSI
Refrigerant Velocity	1029 FPM
Refrigerant Mass Flow (All Coils)	1902 lb/h
Refrigerant Charge (Per Coil)	7.11 LBS
Refrigerant Charge (All Coils)	7.11 LBS

Capacity

Total Capacity Per Coil (Total)	128.97 MBH (128.97)
Sensible Capacity Per Coil (Total)	80.77 MBH (80.77)
Latent Capacity Per Coil (Total)	48.19 MBH (48.19)

Notes:

- Coil is NOT certified by AHRI.
Software version: 0.99.8166